

TOTE PATTERN

Supplies

½ yard - main fabric

¼ yard – large pocket

1/3 yard – small pockets

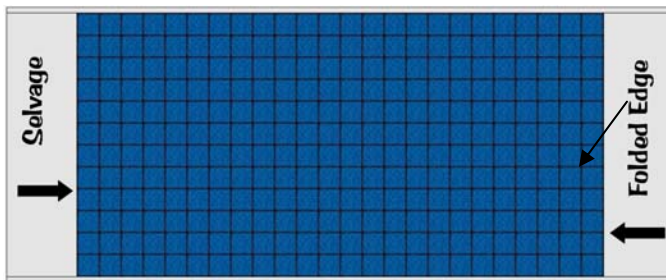
½ yard – straps & band

OR 3 ½ yards of cotton webbing for straps and 1 1/8 yard purchased 1 inch wide trim

½ yard – lining

13 inches – inside pocket

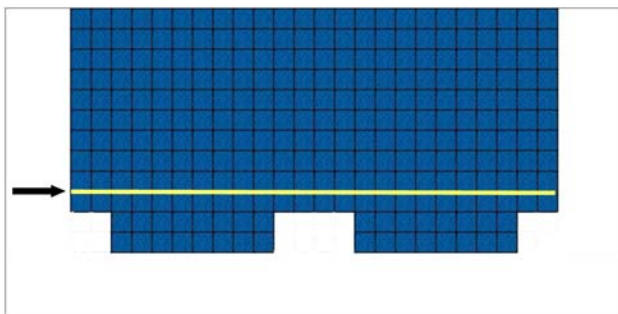
6 ½ x 12 inch Corrugated plastic or other stabilizer for bottom of tote.



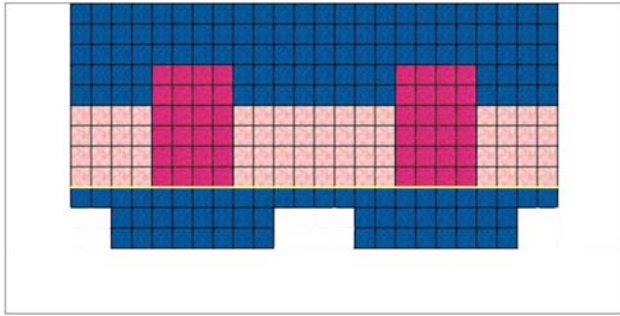
1) Cut main outside piece 19 ½ by 17 inches on fold. Piece will measure 39 x 17 when opened.



2) On cut edges cut out 3 ½ by 3 ½ square. On fold edge cut 3 ¼ by 3 ½ square.

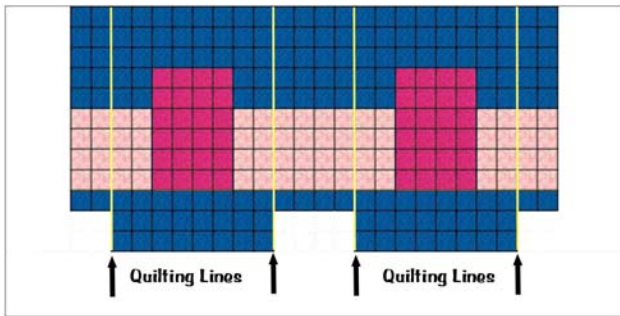


3) Open out main fabric and draw line two inches from top of cut outs for pocket placement.

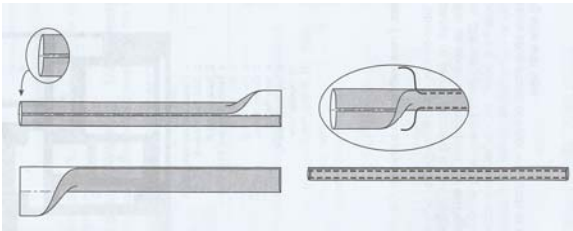


4) Cut large pocket piece 16 x 6. Fold large pocket in half so that it measures 8 x 6. Center large pockets on marked line above cut outs.

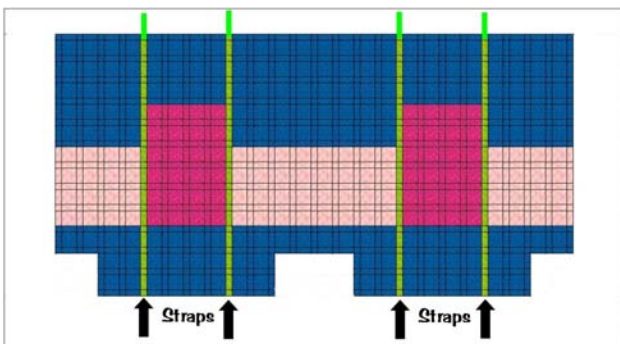
5) Cut 11 inch strip by width of fabric (WOF). Sub cut into two 7 ½ x 11 inch pieces and one 14 x 11 inch piece. Fold the small pockets so that one piece is 14 x 5 ½ and two pieces measure 7 ½ x 5 ½. Place two smaller pockets on outsides of large pockets. Place longest pocket in center between two large pockets. Baste.



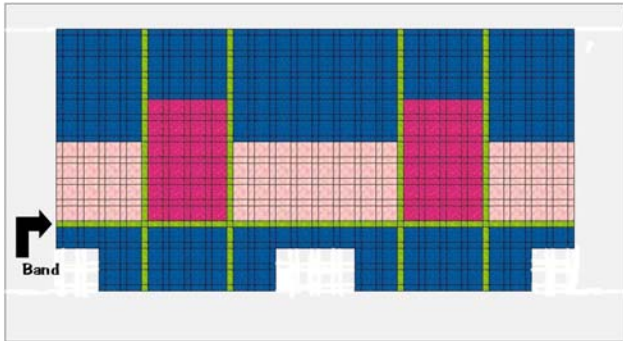
6) Mark lines for quilting at corners of cut outs and extend up to top of main fabric. Place main fabric on batting. Quilt on lines.



7) Straps: Cut 3 pieces 4 ½ by WOF. Sew together and make two straps 4 ½ x 61. Fold wrong sides together and press. Open out and fold edges to the center. Fold together on pressed center.
(IF using purchased cotton webbing skip this step)

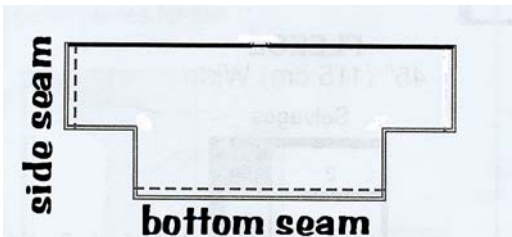


8) Center straps over area where large pockets and small pockets meet beginning at the bottom of the tote fabric. Stitch on both sides of strap to within one inch of top edge. (this will be sewn later)

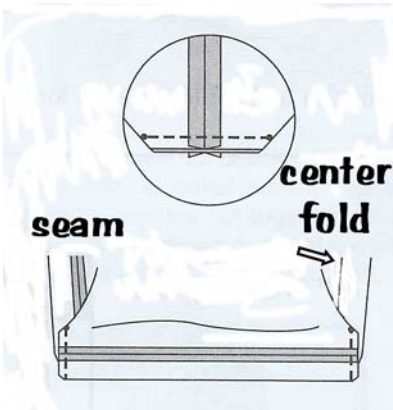


9) Cut band fabric 2 ½ x WOF. Fold band long sides together and sew ¼ inch seam. Turn right side out and press. (IF using purchased trim, skip this step.)

10) Place band over bottom of pockets, trim outside edges even with tote and stitch on both sides.

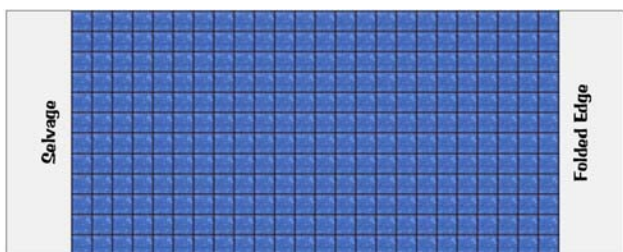


11) With right sides together, sew the side seam and bottom seam of outside fabric. Press seams open.

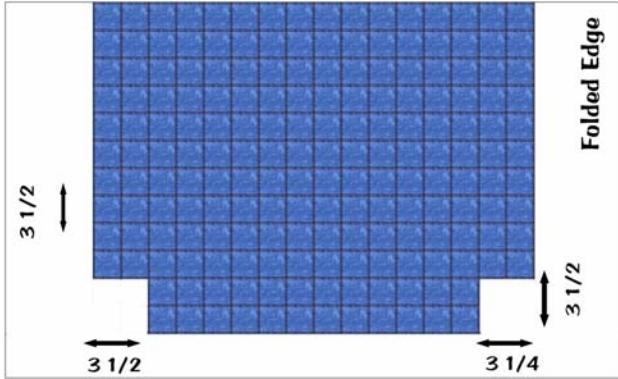


12) Match bottom seam and side seam to form bottom. Sew ¼ inch seam. Match the other bottom seam to the to the remaining side (on fold) and sew ¼ inch seam.

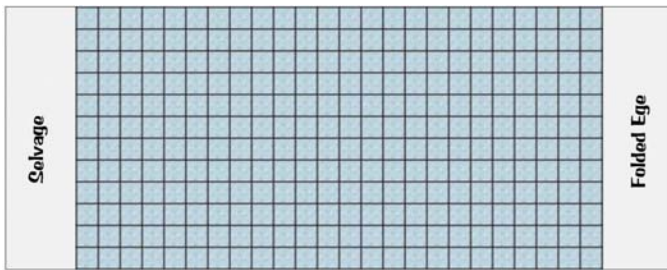
LINING and INSIDE POCKETS



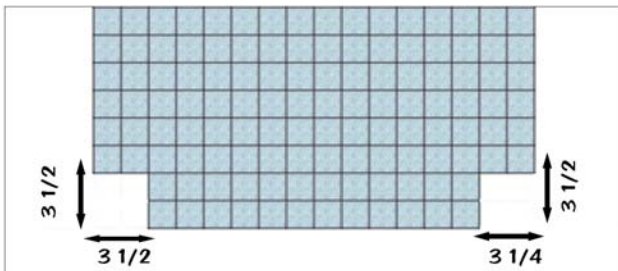
13) Cut lining piece 19 ½ by 17 on fold.



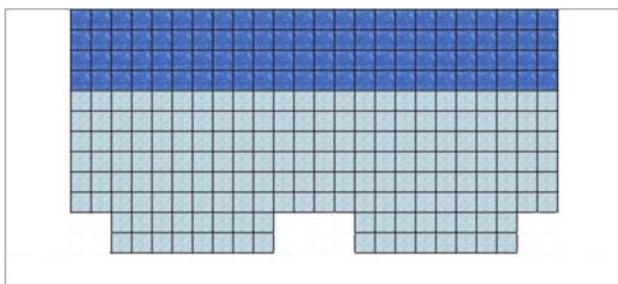
14) On cut edges cut out $3\frac{1}{2}$ by $3\frac{1}{2}$ square. On fold edge cut $3\frac{1}{4}$ by $3\frac{1}{2}$ square.



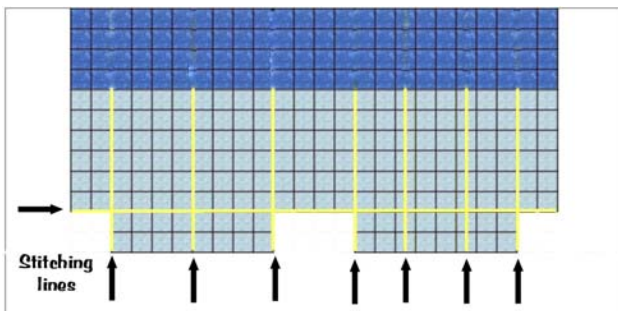
15) Cut inside pocket $19\frac{1}{2}$ by $12\frac{1}{2}$. Opened up it will measure $39 \times 12\frac{1}{2}$



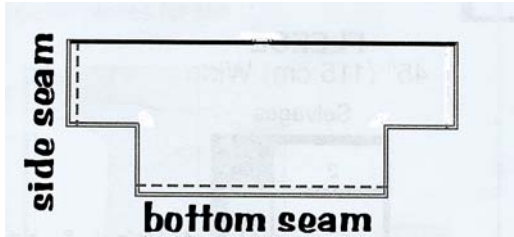
16) On cut edges cut out $3\frac{1}{2}$ by $3\frac{1}{2}$ square. On fold edge cut $3\frac{1}{4}$ by $3\frac{1}{2}$ square.



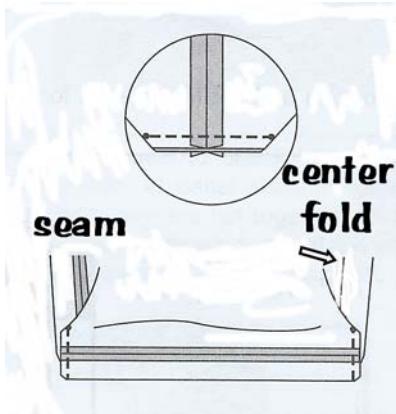
17) Fold over top edge of inside pocket piece and hem. Place inside pocket piece on top of lining matching cut outs. Wrong side to right side.



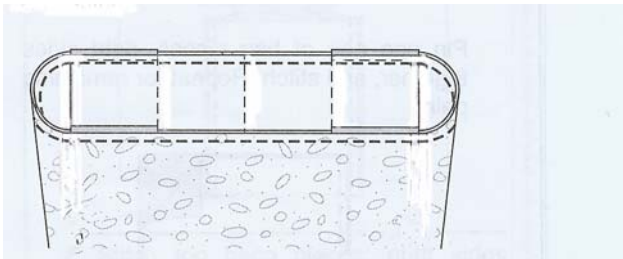
18) Mark lines on top edge of cut out to secure bottoms for inside pockets. Mark Vertical lines for desired pocket size from bottom of lining pieces to top of pocket piece. Sew marked lines. Baste sides of pocket to lining.



19) With right sides together, sew the side seam and bottom seam of lining fabric. Leave 7 inch opening for turning. Press seams open.



20) Match bottom seam and side seam to form bottom. Sew $\frac{1}{4}$ inch seam. Match the other bottom seam to the remaining side (on fold) and sew $\frac{1}{4}$ inch seam.



21) Turn lining inside out. Place tote (right side out) inside lining so that both right sides face. Sew around top edge matching side seams. Turn right side out

22) Cut piece of stabilizer for bottom of bag $6\frac{1}{2}$ x 12 inches. Insert stabilizer through opening into bottom of the bag. Fold under seam allowances and sew together.

23) Finish sewing straps to bag.